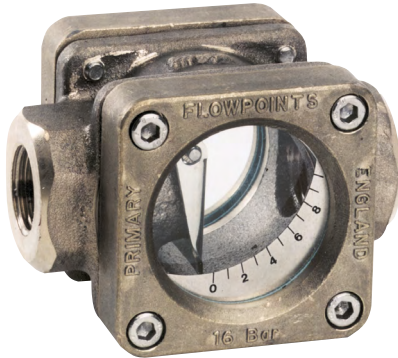




DA-01

Sight Flow Indicator



Features

- / Buckle-free glass-mounting
- / Large inspection window
- / High temperature range
- / Reading possible on both sides
- / Visual evaluation of media
- / Excellent media compatibility

Description:

The DA-01 series of flow indicators is meant for visual and quantitative control on fluid measuring substances. The device has large surfaced sight glasses fitted on both sides and provided with a graduated scale. A fine polished stainless steel flap fitted within the flow area gets lifted by the flow of media and, depending on the volume of flow, shows the current rate of flow on the scale. The flap is mounted on a stainless steel axis and operates with fine linearity purely depending on the gravitation. The DA-01 can be mounted vertically as well as horizontally. Due to its high temperature resistance it can be deployed in many ways.

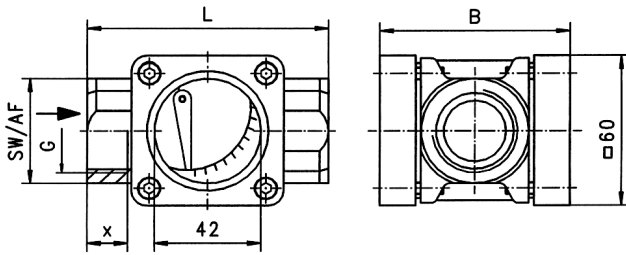
Application:

Flow indicators are deployed for visual and quantitative control of fluid and gaseous media. The device has versatile applicability, especially in the construction of equipment, in process measurement technology or as general monitoring of compressors, cooling subassemblies, blowers and others.



DA-01 Flap Indicator:

Dimensions in mm



Type	G	L	B	X	SW	kg
DA-01.1/4/7	1/2"	85	68	14	38	1.0
DA-01.2/5/8	3/4"	85	68	14	38	1.0
DA-01.3/6/9	1"	95	74	16	42	1.

Process connection

Type	Nominal diameter	Range in l/min	Q _{max} in l/min
DA-01.1/4/7	15	2.1..17	25
DA-01.2/5/8	20	2.1..20	45
DA-01.3/6/9	25	2.1..24	65

Divisions

l/min H ₂ O	1	2	3	4	5	6	7	8	9	10
2.1..17	2.1	3.2	3.8	4.3	4.7	5	5.7	7.5	9.5	17
2.1..20	2.1	3.2	4.5	5.2	5.6	6.3	7.5	8.9	11.6	20
2.1..24	2.1	4.0	5.0	7.0	7.8	9.1	11.1	14.0	17.8	24

Technical Specifications

max. Pressure /	16 bar
Temperature /	200°C
Pressure drop /	0.09 bar for 2 m/s
Housing /	gunmetal BS 1400 LG 2
Flap /	stainless steel 1.4401
Axis /	stainless steel 1.4305
Window /	Soda-Lime-Glass BS 3463
Seals /	C 4400 (Klingersil®)
Rings /	brass
Scale plate /	stainless steel 1.4319
Mounting position /	vertically or horizontally

Ordering Codes:

Order number	DA-01.	3.	1.
DA-01 Flap Indicator			
Process connection /			
1 = G 1/2" female			
2 = G 3/4" female			
3 = G 1" female			
4 = R 1/2" female			
5 = R 3/4" female			
6 = R 1" female			
7 = 1/2"-NPT female			
8 = 3/4"-NPT female			
9 = 1"-NPT female			
Option /			
0 = none			
1 = borosilicateglas for steam and condensate up to 6 bar			