



WD-03

Water Leak Detector

Description:

The water-leak-detector WD-03 series detects conductive liquids e.g. water in drip pans beneath containers. The WD-03 reacts with visible and audible alarms, as soon as it detects a leak, therefore avoiding expensive damages. The operating principle of WD-03 bases on the conductivity of water or another conductive liquid. The contacts at the bottom of WD-03 detect the resistance alteration that takes place, as soon as these contacts are wetted by the leaking fluid and get therefore galvanically connected. Model WD-03.B is battery powered and offers an audible alarm, a visible alarm by red LED and a solid-state-relay output. A yellow LED indicates also, when the battery is weak. Models WD-03.DN, and WD-03.DY are 11. . 27 V AC/DC line powered and include a DPDT-relay. An additional green LED indicates the active supply voltage. Mounting bracket MB is included. It enables the user to adjust the mounting height of WD-03, if it is placed at the bottom of a drip pan, and the unit shall be mounted in an increased position to avoid false alarms. The mounting height of WD-03 is therefore adjustable down to 0.8 mm ground clearance. The bracket can be attached to a flat surface by using either the attached adhesive strips or mounting screws. Of course, WD-03 may also be mounted to the side wall of a drip pan.

Features

- / Cost-effective
- / Protection against short-circuit
- / Protection against corrosion
- / Easy to install
- / Battery or line powered
- / Audible and visible alarms
- / Green LED indicates supply voltage
- / Relay output

Application:

The WD-03 series is used to detect water and other conductive, non-aggressive liquids. The units are simply mounted beneath HVAC facilities, dishwashers, washing machines, refrigerators, compressors or electrical facilities to detect draining conductive fluids. The WD-03 series is very affordable and offers a reliable protection against the significant cost following the spilling of liquids into sensible areas.



Versions:

Supply voltage /

- WD-03.B: 3 V CR2450 lithium metal battery, user replaceable, lifespan app. 5 years steady state, app. 48 hours during alarm condition
- WD-03.DN: 11. . .27 V AC/DC
- WD-03.DY: 11. . .27 V AC/DC

Alarms /

- WD-03.B:
 - audible alarm: min. 85 dB at one foot distance
 - LED-Alarm: red LED
- WD-03.DN:
 - audible alarm: none,
 - LED-Alarm: red LED
 - low battery: yellow LED
- WD-03.DY:
 - audible alarm: min. 85 dB at one foot distance
 - LED-Alarm: red LED

Relay outputs /

- WD-03.B: one SPST-Relay, normally opened, SSR (Solid-State-Relay)
- WD-03.DN: one DPDT Relay
- WD-03.DY: one DPDT Relay

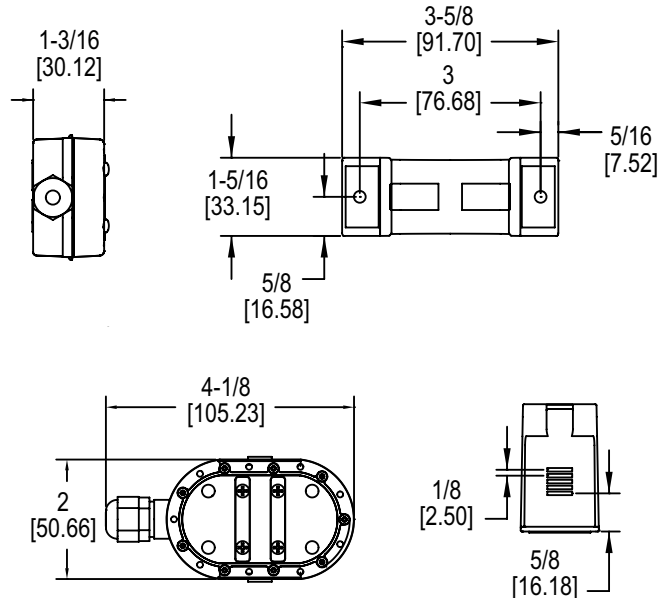
Electrical Specifications:

- Switching load /**
 - WD-03.B: max. 250 mA at 24 VDC
 - WD-03.DN, WD-03.DY: max. 1 A at 24 VAC/DC
- Power consumption /**
 - WD-03.B: 0.9 mA steady state, 3.0 mA during alarm condition
 - WD-03.DN, WD-03.DY: 30 mA steady state, 85 mA during alarm condition
- Electrical connection /** 1,5 m cable (other cable lengths on request), PVC-insulated, 22 AWG, UL plenum rated

Technical Specifications:

- Materials /** ABS and Polycarbonat with flammability classification UL 94 V-0
- Protection class /**
 - WD-03.B and WD-03.DY: submersible up to ¾ of the body height. Beyond this point, water will penetrate into the loudspeaker.
 - WD-03.DN: IP68, submersible
- Temperature range /** 0. . .50°C
- Weight /** ca. 138 g;
- Approvals /** CE, RoHS

Dimensions in inch [mm]:



Ordering Codes:

Order number	WD-03.	B.	MB
WD-03 Water Leak Detector			
Version /	B = battery powered with SPST relay DN = line powered with DPDT relay, 11. . .27 V AC/DC, no audible alarm DY = line powered with DPDT relay, 11. . .27 V AC/DC, with audible alarm		
Accessories /	0 = none MB= additional mounting bracket, one piece is included		