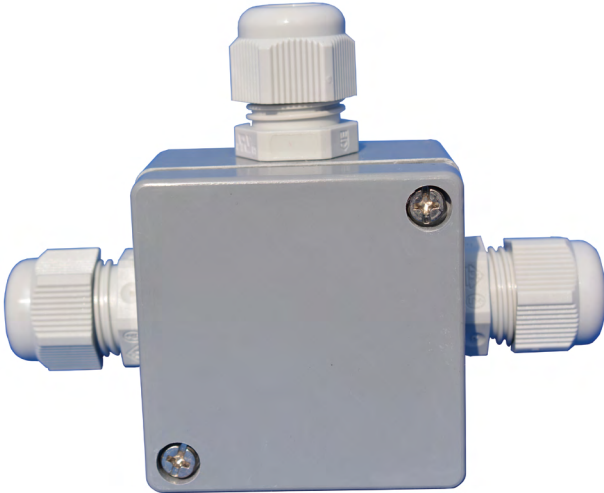




# GH-01

## IP66 Connection Box 55 x 55 x 37 mm



## Features

- / Protection class IP66
- / Two or three cable glands
- / Self-extinguishing
- / Fully insulated
- / Halogen-free
- / Applicable from -20°C to +90°C
- / Impact resistance 7 Joule

## Description:

The connection box GH-01 adds a rough outdoor enclosure to the range of accessories supplied by Profimess. Protection class of this compact housing is IP66, therefore it may even be mounted under harsh weather conditions or in facilities, where water jet cleaning takes place. Two or three pre-assembled M16x1,5 IP68 cable glands for cable diameters from 5 mm up to 10 mm offer enough space for most applications. Optionally two more cable glands (max. four) may be mounted to the free sides of the box.

## Application:

GH-01 is used, where ever the interface between a simple switch or sensor in an outdoor area and the supply or signal circuits has to be protected against environmental influences. The range of application is wide. GH-01 offers a quick, price-worth solution.



## Technical Specifications:

<b>Protection class /</b>	IP66 acc. to EN60529
<b>Material /</b>	glass fibre reinforced, duroplastic polyester
<b>Seal /</b>	flat seal from chloroprene
<b>Colour /</b>	RAL7000, squirrel grey
<b>max. Temperature without cable glands /</b>	-40°C...+100°C
<b>Impact resistance /</b>	7 Joule acc. to EN60079-0
<b>Surface resistance /</b>	>10 <sup>12</sup> Ohm, IEC60093
<b>Flammability /</b>	self-extinguishing; UL94 V-0
<b>Insulation /</b>	fully insulated VDE 0100
<b>Disruptive strength /</b>	18 kV/mm, IEC60243-1
<b>Toxicity /</b>	halogen-free
<b>Cable glands /</b>	2 (3) pieces M16 x 1.5 acc. to DIN 5026, pre-assembled
Material:	polyamid 6 V2
Colour:	light grey, RAL 7035
Protection class:	IP68 5 bar
Temperature range:	-20°C...+100°C
Cable diameter:	5...10 mm
Thread length:	8 mm

## Ordering Codes:

**Order number**

**GH-01. 1**

**IP66 Connection Box**

**Electrical connection /**

2 = two cable glands  
3 = three cable glands

## Dimensions in mm:

