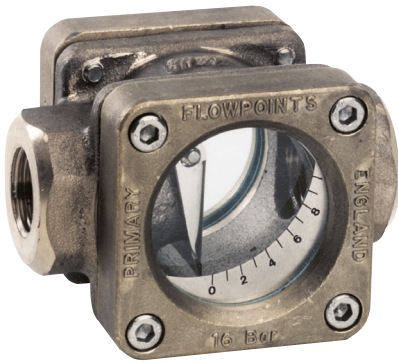




# DA-01/02

## Sight Flow Indicator



## Features

- / Buckle-free glass-mounting
- / Large inspection window
- / High temperature range
- / Reading possible on both sides
- / Excellent media compatibility

## Description:

The DA-01 series of flow indicators is meant for optical and quantitative control on fluid measuring substances. The device has large surfaced sight glasses fitted on both sides and provided with a graduated scale. A fine polished stainless steel flap fitted within the flow area gets lifted by the flow of media and, depending on the volume of flow, shows the current rate of flow on the scale. The flap is mounted on a stainless steel axis and operates with fine linearity purely depending on the gravitation. The DA-01 can be mounted vertically as well as horizontally. Due to its high temperature resistance it can be deployed in many ways.

The DA-02 series of flow indicators is intended for optical monitoring of fluid and gaseous media. The measuring medium lifts a Teflon® ball resting on the valve of the housing. As the volume of flow increases the ball becomes visible in the dome made of borosilicate glass. From its position, it is possible to draw a conclusion on the current volume of flow. The device is suited for mounting it horizontally with its dome showing upwards.

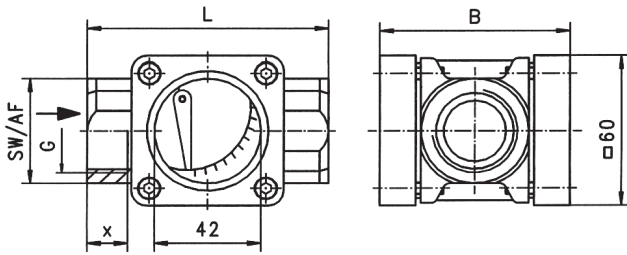
## Application:

Flow indicators are deployed for optical and quantitative control of fluid and gaseous media. The device has versatile applicability, especially in the construction of equipment, in process measurement technology or as general monitoring of compressors, cooling subassemblies, blowers and others.



## DA-01 Flap Indicator:

### Dimensions in mm



Type	G	L	B	X	SW	kg
DA-02.1	1/4"	85	68	14	38	1.20
DA-02.2	3/8"	85	68	14	38	1.10
DA-02.3	1/2"	95	74	16	42	1.25

### Process connection

Type	Connection	Range in l/min	Q <sub>max</sub> in l/min
DA-01.1	G 1/2" IG	2.1..17	25
DA-01.2	G 3/4" IG	2.1..20	45
DA-01.3	G 1" IG	2.1..24	65

### Divisions

l/min H <sub>2</sub> O	1	2	3	4	5	6	7	8	9	10
2.1..17	2.1	3.2	3.8	4.3	4.7	5	5.7	7.5	9.5	17
2.1..20	2.1	3.2	4.5	5.2	5.6	6.3	7.5	8.9	11.6	20
2.1..24	2.1	4.0	5.0	7.0	7.8	9.1	11.1	14.0	17.8	24

### Technical Specifications

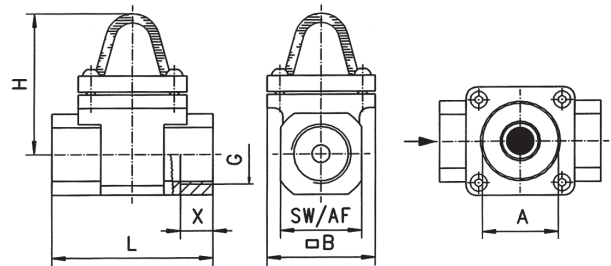
max. Pressure /	16 bar
Temperature /	20..200°C for oil, 0..100°C for water
Pressure drop /	0.09 bar for Q <sub>max</sub>
Housing /	gunmetal
Flap /	stainless steel 1.4310
Axis /	stainless steel 1.4305
Window /	Soda-Lime-Glass
Seals /	C 4400 (Klingersil®)
Rings /	brass
Scale plate /	stainless steel 1.4310

### Ordering Codes:

Order number	DA-01.	3
DA-01 Flap Indicator		
Process connection /		
1 = G 1/2" female		
2 = G 3/4" female		
3 = G 1" female		

## DA-02 Ball Indicator:

### Dimensions in mm



Type	G	L	A	B	H	X	SW	kg
DA-02.1	1/4"	76	42	60	67	12	28	0.8
DA-02.2	3/8"	76	42	60	67	16	28	0.7
DA-02.3	1/2"	76	42	60	67	14	28	0.7
DA-02.4	3/4"	89	42	60	78	18	45	1.4
DA-02.5	1"	89	42	60	78	18	45	1.3
DA-02.6	1 1/2"	118	50	77	95	30	62	2.5

### Process connection

Type	Connection	Range H <sub>2</sub> O in l/min	Q <sub>max</sub> H <sub>2</sub> O in l/min
DA-02.1	G 1/4" IG	0.3..1.5	4
DA-02.2	G 3/8" IG	0.3..1.5	8
DA-02.3	G 1/2" IG	0.3..1.5	12
DA-02.4	G 3/4" IG	2.5..5.0	25
DA-02.5	G 1" IG	4.0..8.0	40
DA-02.6	G 1 1/2" IG	11..23	60

### Technical Specifications

max. Pressure /	16 bar
Temperature /	-20..+200°C
Pressure drop /	0.2 bar for Q <sub>max</sub>
Housing /	stainless steel 1.4436, 1.4410
Ball /	PTFE
Dome /	borsosilicate glass
Seals /	Viton® and Klingersil® C4400

### Ordering Codes:

Order number	DA-02.	3
DA-02 Ball Indicator		
Process connection /		
1 = G 1/4" female		
2 = G 3/8" female		
3 = G 1/2" female		
4 = G 3/4" female		
5 = G 1" female		
6 = G 1 1/2" female		